

PLAT OF SURVEY

- BY -

FRANK H. NELSON

5460 N. MONITOR AVE.

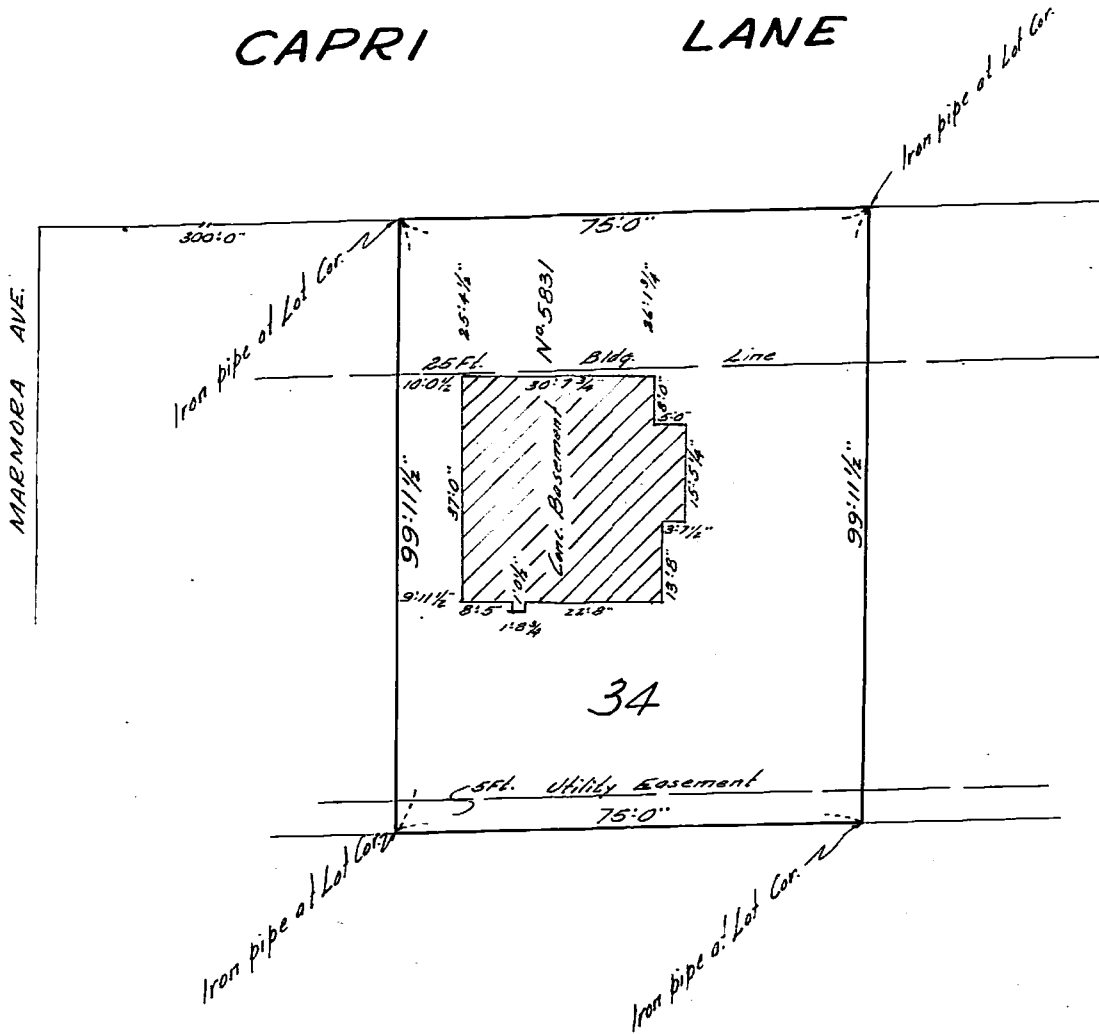
CHICAGO, ILL.

REGISTERED ILLINOIS LAND SURVEYOR
OF

Lot 34 in N. J. Rizzo's Capri Cove, a subdivision in the East 1/2 of Section 17, Township 41 North, Range 13 East of the 3rd Principal Meridian, in Cook County, Illinois.



CAPRI LANE



34



For N.J. Rizzo & Assoc.

SCALE: 1 inch equals 20 feet.

Building lines, if any, shown hereon are building lines

State of Illinois / County of Cook